

PORTABLE 120W TELESCOPIC SOLAR LIGHT

FEATURES

- ✓ All-in-one solar light head
- ✓ Powerful 120W LED
- ✓ Programmable time set (remote)
- ✓ 160W monocrystalline solar panel
- ✓ Strong fully galvanised telescopic pole with lockable hand winch
- ✓ Unique concrete filled metal encased portable block with built-in fork ports
- ✓ Can be custom painted to order
- ✓ Lifting lugs and built-in stainless steel ferrules
- ✓ Can be loaded straight onto truck with no need to disassemble
- ✓ 16mm base plate with strengthening plates

SPECIFICATIONS

Block width	1150 x 1150 mm
Block weight	502 mm
Block weight	1153 kg
Fork ports	200 x 100 mm
Height lowered	3.2 metres
Height extended	6 - 7 metres
Overall weight	1300.8 kg

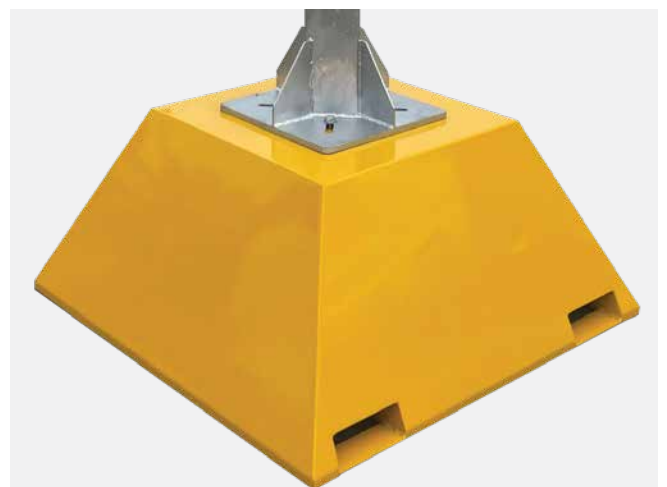




POWERFUL LED SOLAR LIGHT HEAD COUPLED WITH UNIQUE CONCRETE FILLED METAL ENCASED BLOCK WITH TELESCOPIC MAST

LIGHT HEAD SPECIFICATIONS

LED brand	Phillips
LED qty (chips)	384
Solar panel	36 V / 160 W
LiFe PO4 battery	25.6 Ah / 921.6 Wh
Light mode	Time control (remote control)
Product dimensions	1712 x 423 x 60 mm
Product net weight	32.8 kg
Luminous flux	21,600 Lm
Colour temperature	2700 ~ 6500
Beam angle	150° x 80°



Heavy duty steel encased concrete block complete with fork ports and lifting lugs